

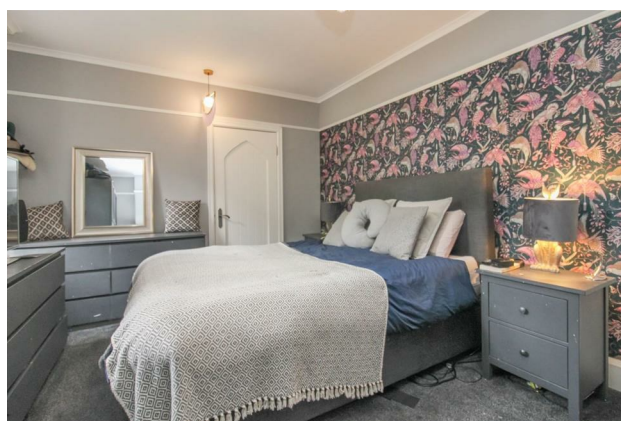
HUNTERS®

HERE TO GET *you* THERE

2 Larchwood Woodlands Drive, Rawdon, Leeds, LS19 6JZ

£1,595 Per Month

Property Images



HUNTERS[®]

HERE TO GET *you* THERE

Property Images



HUNTERS[®]

HERE TO GET *you* THERE

Property Images



HUNTERS®

HERE TO GET *you* THERE

EPC

Energy Efficiency Rating		
	Current	Potential
Very energy efficient - lower running costs		
(92 plus) A	44	83
(81-91) B		
(69-80) C		
(55-68) D		
(39-54) E		
(21-38) F		
(1-20) G		
Not energy efficient - higher running costs		
England & Wales		EU Directive 2002/91/EC

Map



Details

Type: House - Terraced Beds: 3 Bathrooms: 1 Receptions: 1 Tenure:

Summary

Nestled in the highly desirable Woodlands Drive conservation area, Larchwood offers characterful living accommodation among a beautiful rural setting.

The ground floor briefly comprises; entrance hall with access to the downstairs WC, main reception room, kitchen/dining area. To the first floor can be found the stylish house bathroom with roll top bath and separate shower unit, along with the two double bedrooms. Externally, there are extensive communal gardens, with large grass play area, communal tennis courts and 7 acres of grounds to explore.

Finally, the property benefits from 2 allocated parking spaces

Features

- IDYLIC LOCATION • 7 ACRES OF LAND • COMMUNAL GARDENS • TENNIS COURTS • CHARACTER PROPERTY • COUNCIL TAX BAND